

INTIMATE COLLECTION

# KYOTO, JAPAN

EVENTS DOSSIER

A 4 day / 3 nights events  
program to Kyoto

Prepared by  
**Asia** Concierge



	DAY ONE	DAY TWO	DAY THREE	DAY FOUR
DESTINATION	TRAVEL TO KYOTO	KYOTO	KYOTO	DEPARTURE
BREAKFAST	In flight	At hotel	At hotel	At hotel
MORNING	In flight	<b>Travel Program :</b> Cycling Through the Ages	<b>Travel Program :</b> Optional Samurai Sword Cutting	At leisure until transfer out for onward international flight
LUNCH	In flight	Lunch at Tempura Endo Yasaka	Lunch options	
AFTERNOON	Group arrives Kansai International and transfer to hotel in Kyoto	<b>Travel Program :</b> Shrines & Sake	<b>Travel Program :</b> Arashiyama & Bamboo Forest OR Rail & River Rapids (inclusive as a full day)	
EVENING	Dinner Hyoto Shabu Shabu	Kyoto Dine Around	Farewell event at Fortune Garden	
OVERNIGHT	At selected hotel in Kyoto	At selected hotel in Kyoto	At selected hotel in Kyoto	In flight

**KYOTO ARRIVAL**

Separate luggage vans  
Coaster or coach transportation  
Private Travel Expert per vehicle

**KYOTO ARRIVAL**  
JAPAN

Kyoto, a city that seamlessly blends ancient traditions with modern sophistication, is a cultural treasure trove and an ideal destination for incentive travel programs seeking a glimpse into Japan's rich heritage.

Step back in time as you explore Kyoto's historic streets, traditional neighborhoods, and well-preserved heritage sites. The city's commitment to preserving its cultural heritage makes it a living museum, showcasing the essence of Japan's past.

It is this incredible heritage that forms the base of any incentive program to the city and with its delicate cuisine and slew of small, intimate dining spaces, Kyoto is ideal for that smaller group size that wishes to immerse themselves in a culture that remains the fabric of every day life here.

Whilst perfectly suited as a stand alone destination, Kyoto can also be twinned with Tokyo with access via the Bullet Train.



Hyoto Shabu Shabu exterior

## HYOTO SHABU SHABU

KYOTO DINING

Hyoto Shabu Shabu is a modern interpretation of a classic Japanese house with striking 'clean lined' architecture. Before you set foot inside it is obvious that the restaurant wants to elevate shabu-shabu from a "great party dish," as Japanese culinary maestro Shizuo Tsuji called it, to a fine dining experience.

From outside it's difficult to tell if you're entering an upscale boutique or perhaps an understated wedding venue.!"

Inside the restaurant, which is essentially one long room flooded with light, tables are sequestered behind floor-to-ceiling screens composed of chain mail so that the light and the aroma from the pots bubbling over filters fill around the restaurant.

The waiting staff, all female and all dressed in kimonos, glide past in and out of sight. It's all very theatrical, but understated.

### Inclusions :

- Return transportation
- Private dining (pending group size)
- Menu options
- Free flow wine, beer, drinks during dinner



Restaurant interior



Service by ladies in Kimono



Cycling through Gion district

## CYCLING THROUGH THE AGES

DEPART 0900 - RETURN 1300

This adventure presents a unique opportunity to delve into the heart of Kyoto's traditional culture while enjoying the natural lure of the river. As you pedal through the charming streets of Gion, famed for its preserved machiya townhouses and geisha culture, you'll feel transported back in time. The cycling ride is slow paced and offers glimpses of geisha in elegant kimono, hidden teahouses, and atmospheric lantern-lit alleys, allowing you to immerse yourself in the city's rich heritage.

Time for a tea break at Ran Hotei. Situated in a quaint old building, Ran Hotei specialises in "Chanoyu" or "Japanese tea ceremony" as well as delicious desserts. Go through the intricacies of pairing matcha tea (powdered green tea) with cheesecakes before powering back up on the bikes to continue our ride.

We make a stop at Gion Corner, home to a traditional performing arts centre. A private performance is approximately one hour long and includes chanoyu (the art of preparing tea), koto music, ikebana flower arrangement, bugaku dance, kyogen comedy, and Kyomai dance.

Cycling along the Kamo River's tranquil path, we'll be treated to serene views of the surrounding nature, making for a picturesque journey that beautifully juxtaposes urban and natural beauty. It is here we stop for a vintage picnic set up with baskets with thermos flasks, biscuits and mugs, and benches, tables, mats and straw hats. Enjoy an ice coffee or hot brew with a food selection and absorb the beautiful surroundings before cycling further and returning to the start point where our program concludes.

### Inclusions :

- Return transportation
- English speaking Travel Expert
- 1x bicycle per guest with bottled water
- Private cultural performance
- Private tea ceremony
- Vintage picnic set up at Kamo River

**Note:** Lunch is not included on this program, however, various snacks are included at both the tea ceremony and the river picnic, which can be supplemented further or kept to a minimum if taking the group to lunch.



Streets of Gion district



Tea ceremony



Vintage picnic



Tempura Endo Yasaka

## TEMPURA ENDO YASAKA

KYOTO DINING

Tempura Yasaka Endo is a renowned culinary destination nestled in the heart of Kyoto, Japan. With a history spanning over 150 years, this iconic restaurant has perfected the art of tempura, offering a dining experience that is both exquisite and memorable.

Located near the famous Kiyomizu-dera Temple, Tempura Yasaka Endo combines traditional Japanese aesthetics with a warm and inviting atmosphere. The interior showcases the craftsmanship of a traditional machiya, featuring wooden furnishings, sliding doors, and a counter where guests can witness the meticulous preparation of their tempura dishes.

The menu at Tempura Yasaka Endo showcases an array of seasonal ingredients, expertly coated in a light and crispy batter, then delicately fried to perfection. From succulent prawns to fresh vegetables, each piece of tempura is served piping hot and accompanied by a selection of dipping sauces and freshly grated daikon.

The attentive and skilled chefs provide personalized service, ensuring that each guest's dining experience is tailored to their preferences. With its unwavering dedication to quality and the mastery of tempura, Tempura Yasaka Endo offers an unparalleled culinary journey for those seeking an authentic taste of Kyoto.

### Inclusions :

- Return transportation
- Private section of restaurant
- Tempura based dining menu
- Free flow wine, beer, drinks with meal



Tempura Endo Yasaka



Tempura Endo Yasaka interior



Tempura Endo Yasaka cuisine



## SHRINES & SAKE

DEPART 0830 - 1230

Fushimi Inari, located in Kyoto, Japan, is a revered Shinto shrine and one of the most iconic and visited sites in the country. Famous for its thousands of vibrant orange torii gates, Fushimi Inari offers a mesmerizing experience for visitors. The shrine is dedicated to Inari, the Shinto deity of rice and prosperity, and is surrounded by a lush forested hillside.

As you embark on the winding path up the mountain, passing through the countless torii gates, you'll encounter serene stone fox statues, which are considered the messengers of Inari. The vibrant colors, the spiritual ambiance, and the panoramic views from the summit make Fushimi Inari a truly enchanting destination that showcases the rich cultural and religious heritage of Japan.

Close to Fushimi Inari, the Gekkeikan Sake Brewery presents a captivating opportunity to explore the world of traditional Japanese sake.

Founded in 1637, Gekkeikan is one of the oldest sake breweries in Kyoto and is renowned for its high-quality sake production. You can enjoy a visit to the historical buildings, sake cellars, and a tasting session to savor a variety of Gekkeikan's sake offerings. Immerse yourself in the fascinating world of sake production and gain a deeper appreciation for this beloved Japanese beverage.

### Inclusions :

- Transportation
- English speaking Travel Expert
- Entrance fees and touring
- Sake tasting menu
- Range of canapés with Sake tasting



Fushimi Inari Shrine



The Torii Gates



Barrels of Sake



Gekkeikan Sake Brewery



Long table dining

## KYOEN

### KYOTO DINE AROUND

Hanamikoji is an eye-catching street in Kyoto's Gion district lined with tea houses and high-end restaurants. Along the street just north of Shijodori is the Kyoto Gion Hotel, a popular new spot that opened in 2019.

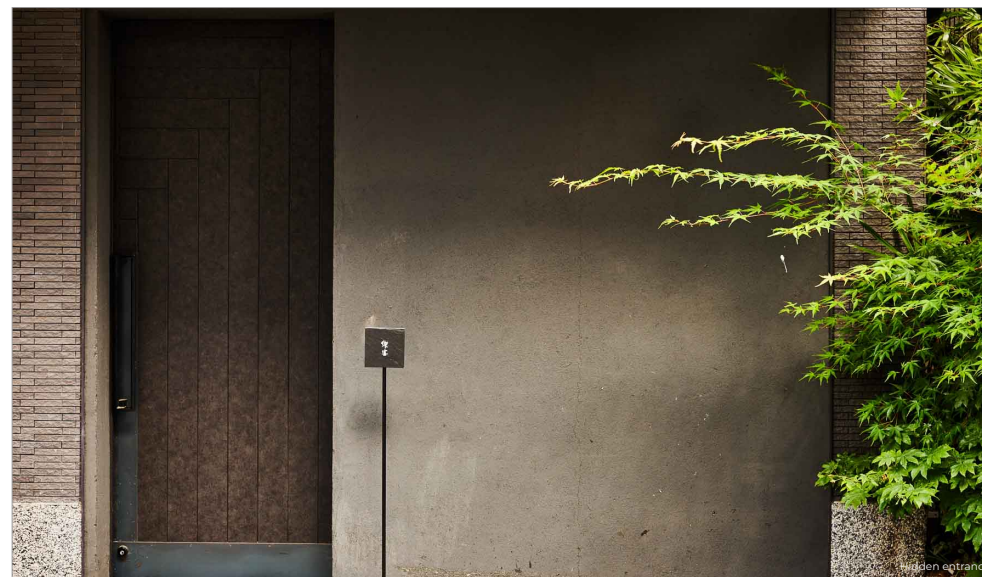
On the first floor is Kyoen, a wine restaurant the gourmet world is buzzing about because of its illustrious backing. The producers are highly acclaimed chefs Yamagishi and Yamaguchi of restaurants Tominokoji Yamagishi and Yamaguchi, respectively, who, while pleased with their own successful restaurants, sought a way to serve guests long waiting for a chance to enjoy their cuisine.

The chic, chilled-out space is precisely what guests have been seeking in Gion, opening high-quality dining to a new, younger generation of adults. Nothing prepares you for the stunning 20-meter counter extending from the entrance deep into the restaurant space.

A wine cellar within the counter holds over 1,000 bottles of mostly French wine and champagne. While the space exudes a great sense of comfort and ease, all around, you will find the finest tableware and accoutrements.

#### Inclusions :

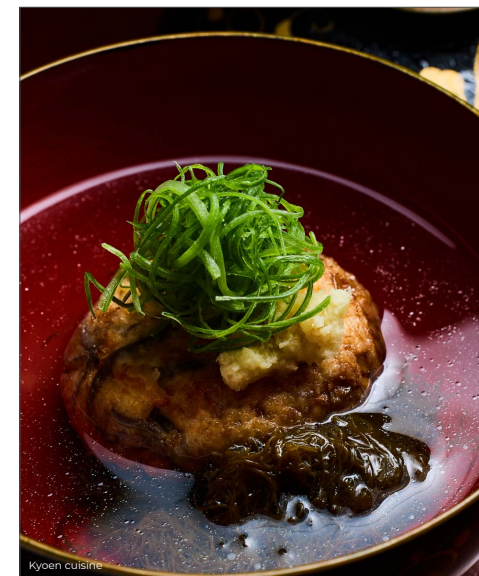
- Return transportation
- Private long table dining
- Seasonally created ten course meal
- Wine pairing options



Hidden entrance



Kyoen cuisine



Kyoen cuisine





Long table dining

## GION MOURIYA

KYOTO DINE AROUND

Gion Mouriya teppanyaki restaurant is a hidden gem nestled in the historic Gion district of Kyoto, Japan. Renowned for its authentic teppanyaki experience, this restaurant offers a unique blend of traditional Japanese charm and modern culinary artistry. As you step into Gion Mouriya, you are greeted by a serene and elegant atmosphere, with traditional Japanese decor and soft lighting that creates a warm and inviting ambiance.

The teppanyaki dining experience at Gion Mouriya is a true delight for the senses. Skilled chefs showcase their craftsmanship and culinary expertise right before your eyes as they expertly grill a variety of high-quality ingredients, including prime cuts of Japanese beef, fresh seafood, and seasonal vegetables.

Each dish is prepared with precision and care, ensuring that the flavors are enhanced and the textures are perfectly balanced. The restaurant's dedication to using locally sourced ingredients adds an extra touch of authenticity to the dining experience.

The combination of the artful presentation, the tantalizing aromas, and the interactive nature of teppanyaki cooking make dining at Gion Mouriya a memorable and immersive experience that captures the essence of Japanese culinary mastery.

### Inclusions :

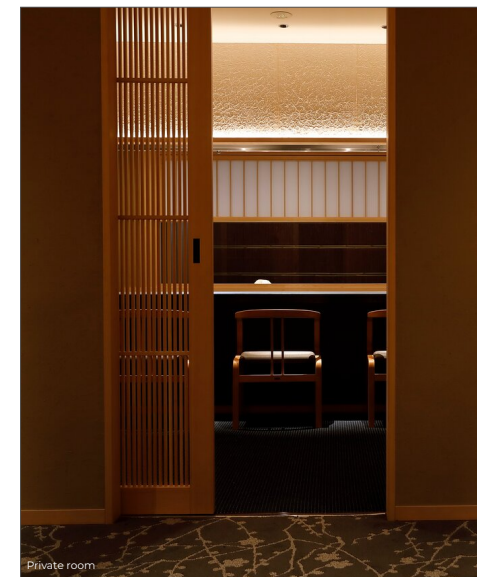
- Return transportation
- Private long table dining
- Teppanyaki menu options
- Free flow wine, beer, drinks with meal



Main table dining



Dining room



Private room



Samurai sword cutting

## SAMURAI SWORD CUTTING

KYOTO

Learn the ways of the Samurai with a lesson on how to handle the famed katana sword in one of Kyoto's renowned private schools.

Get a glimpse into the philosophies of Bushido, the way of the warrior, through wielding a real katana and follow through with Zen meditation, used by the samurai to calm their minds during battle.

Guests are first introduced into the private samurai residence, and will change into the "Hakama", the traditional black samurai clothes

The master will provide a brief introduction about the samurais, and demonstrate some moves with the sword. Before being given a real blade it is important to master the basics. Guests will begin training using wooden practice swords and be instructed on the proper grip, posture, and form.

After learning the basics, the next step is to wield a real katana, and use it to cut through a goza mat. The goza mat is placed vertically on a special stand where guests can put their newly acquired sword skills to the test. The mat used for the exercise will resemble the same strength and density as a human neck, making the experience feel just like samurai training.

After various practices we wrap up the course by learning how to meditate using singing bowls. A singing bowl is a type of bell, the sounds of which help to clear and calm the mind. Though this deep meditation you will be able to dissipate some of the excitement from practicing with the sword and also learn ways in which Zen meditation can assist all in our daily life.

### Inclusions :

- Return transportation
- Exclusive use of venue (numbers limited)
- Private samurai sword cutting instruction and lessons



Wearing the Hakama



Samurai sword



### RAIL & RIVER RAPIDS

DEPART 14:00 - RETURN 18:00

All aboard the Sagano Scenic Railway, also known as the Sagano Romantic Train, running from Kyoto's western edge to the rural town of Kameoka. The diesel locomotive winds its way through the mountains at a leisurely pace, taking about 25 minutes to make the 7.3-kilometer run along Hozukyo Gorge and through some of Kyoto's most picturesque scenery. Time your visit accordingly to enjoy cherry blossoms in spring, verdant green landscapes in summer or the fire and rust-filled colours of autumn.

Upon arrival at the train station a short transfer takes us to the Hozugawa River where our private boats await us to whisk us downstream back to Kyoto. The boat trip covers 16 km and takes approximately 2 hours to transverse along mostly broad and calm waters, but in some places the river narrows, and we can experience rapids which are navigated by the experienced boatsmen.

The scenery and landscape that unfolds as we silently glide and get carried along the river stream, pushed and navigated by the long poles of the boatsmen, is exquisite!

All the way, we will be surrounded by tall forest-covered mountains. The highest one is Mt Atago (924 m). You will see massive rock formations, lots of different trees like cherry trees and maple trees, birds, fish, bridges, and trains passing by on the hillsides.

En-route a cool floating cafe boat will pull up alongside to offer a variety of food and drinks ranging from hot dogs, dumplings, and grilled meat, as we continue our voyage until we arrive in Arasyhimaya, near Kyoto and home to the famed Bamboo forest.

#### Inclusions :

- Private carriage on Sagano Scenic Railway
- English speaking Travel Expert
- Private river boat journey
- Food and drinks served from floating boat
- Return transportation

**Note:** This program can be combined with Arasyhimaya and the bamboo forest to make a full day excursion



The rapids of Hozugawa River



Boat departure point at Kameoka



Still waters of the Hozugawa River



Rickshaw through the Bamboo Forest

### ARASHIYAMA & BAMBOO FOREST

DEPART 0900 - 1300 or 1400 - 1800

Tenryuji Temple is a UNESCO World Heritage Site and one of the most important Zen temples in Japan. It was originally built in the 14th century and has been destroyed and rebuilt several times throughout history. The temple is known for its stunning garden, which features a large pond, several bridges, and a variety of plants and trees. Visitors can explore the temple's many buildings and shrines, including the main hall with its impressive painted screens and carvings.

The Arashiyama Bamboo Forest is located just a short walk from Tenryuji Temple and is Kyoto's most regarded natural wonder. The forest features towering bamboo stalks that create a serene and peaceful atmosphere. And there is no finer way to navigate through the forest than by local rickshaw!

There is a separate trail for the rickshaw's to follow but for those who may prefer to walk our Travel Expert will accompany you.

The last part of the bamboo forest can only be accessed on foot, so we will park the rickshaw within walking distance and then be guided through to the most famous and impressive part of the bamboo forest.

Thereafter we re-board our vehicle and return to our hotel in Kyoto.

#### Inclusions :

- Return transportation
- English speaking Travel Expert
- All touring and fees
- Rickshaw ride (2 per rickshaw)



Tenryuji Temple



Gate to Tenryuji Temple



Bamboo forest



Asia Concierge



Fortune Garden rooftop

*Evening Event*  
FORTUNE GARDEN



Private room dining



Fortune Garden




Asia Concierge



Fortune Garden interior

FORTUNE GARDEN  
KYOTO

Designed by the master of modern architecture Goichi Takeda, the Fortune Garden is the former headquarter building of Shimadzu Corporation. Built in 1927, this historic landmark lies in the heart of Kyoto and has been reborn as a restaurant and event space.

On the lower ground floor is a French bistro restaurant where guests can casually enjoy seasonal ingredients with a view of the beautiful green bamboo grove garden. The restaurant is located in a historic Western-style building that features a warm and inviting atmosphere popular with locals.

The artful presentation of the dishes reflect the restaurants commitment to creating a dining experience that is both beautiful and gastronomically delightful.

Throughout the building are various private rooms and bars that can be hired privately, all of which hold their own distinctive atmosphere and design.

In warm, dry weather the rooftop can be taken over and transformed into a gorgeous retreat, hidden behind hedging and plants. Lounges with soft cushions, mats and rugs and dozens of candles and lanterns set the mood for a casual, albeit elegant pre dinner drinks gathering or a location for heavy canapés in place of a sit down dinner.

**Inclusions :**

- Return transportation
- Pre dinner cocktail reception on rooftop
- Main dinner in the bistro restaurant or garden courtyard or private room pending group size
- European dinner menu options
- Free flow beer, wine, soft drinks with meal



Serving sake



Sake barrel

## FORTUNE GARDEN ENTERTAINMENT

KYOTO

Kagami-biraki is a ceremony performed at celebratory events in which the lid of the sake barrel is broken open by a wooden mallet and the sake is served to everyone present. Kagami refers to the lid of the sake barrel and biraki means "to open" so kagami-biraki literally means "opening the lid." Because of the lid's round shape, the kagami is a symbol of harmony. The kagami-biraki, therefore, represents an opening to harmony and good fortune.

Commence dinner at the Fortune Garden with your very own 'Kagami-biraki' and toast to the future!

Whilst there are a range of dance performances to consider in Kyoto, most do focus on the dance of the Geisha, however, considered one of Japan's most elegant and visually appealing dances the Awa Dori form part of the country's largest festival and here the women's dance troupe don fan-shaped amigasa (braided hats).

Historically, amigasa were a favorite of ninjas, who would conceal weapons and documents, and disguise identities under the broad brims. Listen for the clickety-clack tapping of the ona adori groups whose members wear black wooden sandals, or geta, with candy cane-striped straps. The table-like design helps the female dancers stand on their toes, which is how the elegant ona adori dance is performed.

### Inclusions :

- Company logo on Sake barrel (s)
- Barrel opening ceremony
- Pre dinner sake drink
- Awaodori dance performances (other options available)



Awaodori dance performance



Sake barrel breaking



Awaodori Dance



Chion-ji Temple, Kyoto





# Asia Concierge

## Why us?

Ever evolving, ever changing ... that's Asia in general. But nowhere is the natural beauty, spiritual and cultural richness of Asia as colourful and impressionable as Japan.

Asia Concierge may be a new operator to market, however, it is managed at all levels by veterans and pioneer of the events industry in Asia.

Our Japan team have always been proud to lead the industry with the development of creative content and the sourcing of new venues.

Venues that have been tried and tested are now looked at with fresh eyes, taking concepts, theming and creative content beyond previous boundaries. New venue sourcing is ongoing, constantly on the look out for locations that are authentic and representative of Japan's rich and eclectic culture.

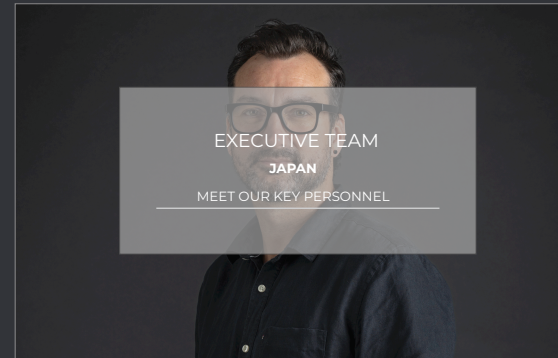
This approach to our business extends to our excursion offerings. Not content with regular tour activities, a destination's highlights are brought to life with fine touches and elements that bring a sense of fun, exploration and further cultural understanding to the guest, leaving behind an indelible memory on ones time in Japan.

*"Our legacy may have been created by the past, but we want to be remembered for what we are going to do today and tomorrow."*

[asia-concierge.com](http://asia-concierge.com)







SUPPORT TOOLS FROM THE ASIA CONCIERGE WEB PORTAL

Asia Concierge Japan Ltd

travel-japan@asia-concierge.com

